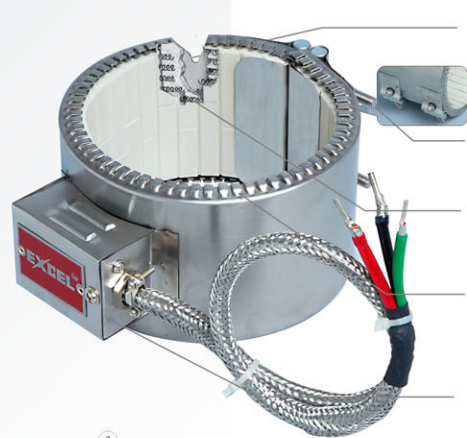
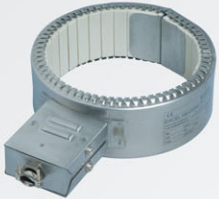


## CERAMIC HEATERS

### High Temperatures & Wattages

#### SPECIFICATIONS

- Dia : 2 ½" or 65mm and up.
- Width : 1 ½" or 38mm and up.
- Voltage : Up to 480V (single or three phase)
- Watt Density : Up to 50W/Sq. In.
- Resistance Tolerance : NEMA Standard plus 10% Minus 5%
- Wattage Tolerance : NEMA Standard plus 5%, Minus 10%
- Terminals : Junction Box fitted with braided cable & Post terminals & many more options
- Sheath : Stainless Steel 304
- Clamping Arrangement : M6 Fastner
- Maximum ID : Consult factory
- Thickness : 12mm



Heater built in Ceramic fiber insulation will reduce power consumption.

Spot welded "Clamp bars" provide uniform clamping force.

Helical heating coil made of high quality nickel chrome resistance wire inserted in the holes of Ceramic "Steatite" insulators.

Stainless Steel housing with serated edges provide maximum flexibility for ease of installation.

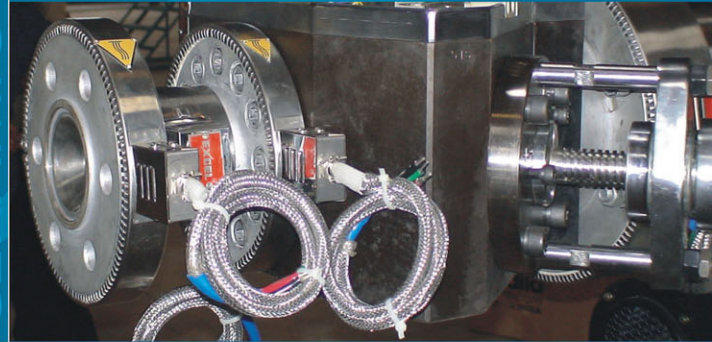
Protective terminal box with metal braided fiberglass insulated lead wire the high electrolyty copper lugs are crimped on the exit of the lead wire.

2

## CERAMIC HEATERS

#### FEATURES

- EXCEL's Ceramic Band Heaters are versatile & widely used throughout the industry
- Especially to heat the cylinders (barrels) on all types of plastic(s) processing machinery
- Higher watt densities provide higher operating temperatures
- Maximum sheath temperature up to 800°C
- Maximum watt density = 50 watts/square inches
- By the use of higher temperatures, faster shot sequence is possible
- Use of special ceramic material "steatite" with high thermal conductivity



3